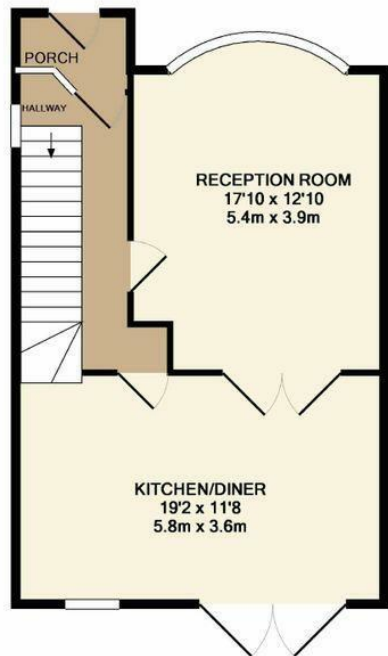




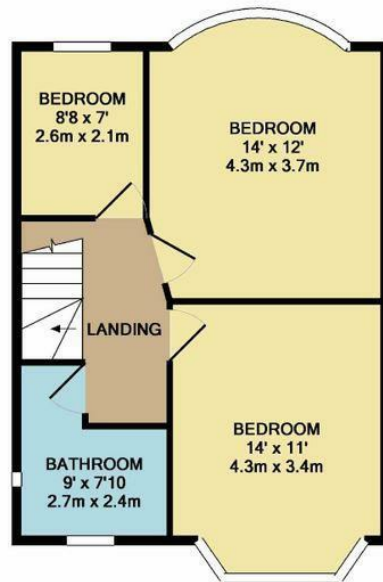
Lansdowne Road, Chingford, E4 7SJ

PER MONTH  
£2,500 Per Month

 Coultons



GROUND FLOOR  
APPROX. FLOOR  
AREA 530 SQ.FT.  
(49.2 SQ.M.)



1ST FLOOR  
APPROX. FLOOR  
AREA 489 SQ.FT.  
(45.4 SQ.M.)

TOTAL APPROX. FLOOR AREA 1018 SQ.FT. (94.6 SQ.M.)

Whilst every attempt has been made to ensure the accuracy of the floor plan contained here, measurements of doors, windows, rooms and any other items are approximate and no responsibility is taken for any error, omission, or mis-statement. This plan is for illustrative purposes only and should be used as such by any prospective purchaser. The services, systems and appliances shown have not been tested and no guarantee as to their operability or efficiency can be given  
Made with Metropix ©2019



#### Energy Efficiency Rating

	Current	Potential
Very energy efficient - lower running costs		
(92 plus) <b>A</b>		
(81-91) <b>B</b>		
(69-80) <b>C</b>		
(55-68) <b>D</b>		
(39-54) <b>E</b>		
(21-38) <b>F</b>		
(1-20) <b>G</b>		
Not energy efficient - higher running costs		
<b>England &amp; Wales</b>	EU Directive 2002/91/EC	



Agents Note: Whilst every care has been taken to prepare these particulars, they are for guidance purposes only. All measurements are approximate and are for general guidance purposes only and whilst every care has been taken to ensure their accuracy, they should not be relied upon and potential buyers/tenants are advised to recheck the measurements



#### OFFICE DETAILS

26 Station Road  
North Chingford  
London  
E4 7BE

020 8090 0860  
sales@coultons.co.uk  
www.coultons.co.uk

#### OFFICE DETAILS

425a Lordship Lane  
Wood Green  
London  
N22 5DH

020 3869 8989  
sales@coultons.co.uk  
www.coultons.co.uk